



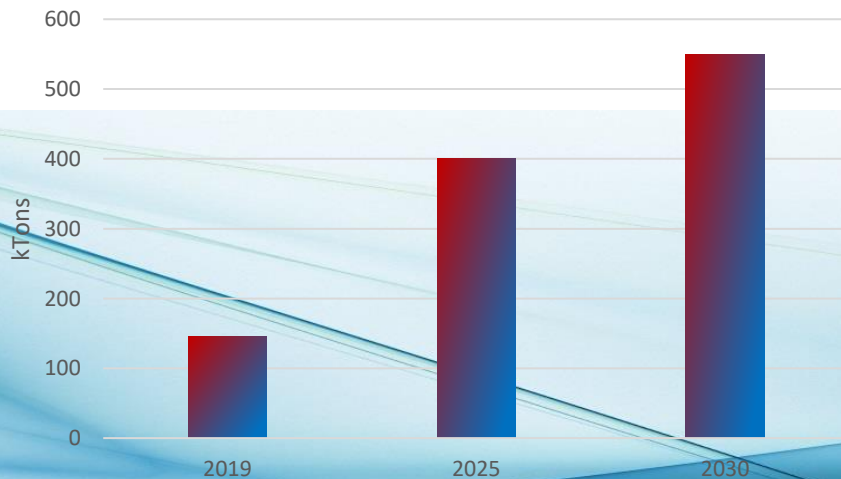
2023 THERMOFORMING: A PATH TO CIRCULARITY

Recyclability improvements in the PET trays value chain
June 14th - Bologna

Tray Circularity Evaluation Platform

- PET-based trays contain on average around 55% of recycled plastics but this is just the first step already achieved towards circularity
- Besides separate collection growing trends and proper sorting of trays and other PET sheet-based products, design for recycling is a major tool to boost their circularity

PTTs collected for recycling projection (1)



Sources:
(1) PET Market in Europe. State of play. Eunomia 2021

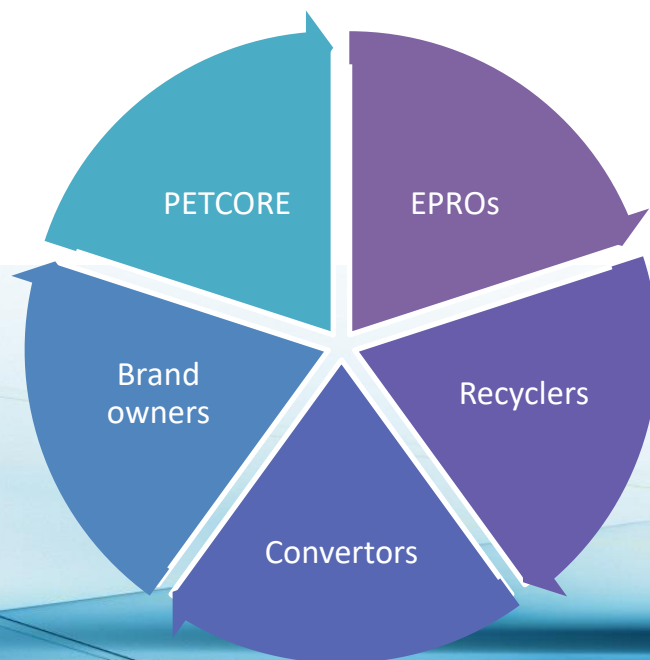


Driving Force: To drive and promote the recyclability and circularity in the PET tray value chain, providing to industry design guidelines and package – technology assessments.

- Give support to the value chain of thermoformed PET trays to improve recyclability of thermoforms and strive to circularity.
- Technical experts in the field of PET thermoforms design, production and recycling:
 - ✓ Evaluation of existing technologies and innovations
 - ✓ Independent and confidential assessment of their impact on the PET recycling processes across Europe.

Tray Circularity Evaluation Platform

- The Platform consists of technical experts in the field of PET thermoforms design, production and recycling, whose only objective is the evaluation of existing technologies and innovation and providing an independent and confidential assessment of their impact on the PET thermoforms recycling processes across Europe. The platform is funded by Petcore Europe





TCEP Expert Teams

Steering Committee

- Sets the Vision and the Mission
- Adjusts the structure and assessment procedure of the TCEP
- Defines priorities of the Platform (strategic level);
- Reviews and validate the recommendations of the Technical Committee;
- Approves the external communication.

Technical Committee

- Assesses the impact on recyclability of new PET thermoforms concepts
- Creates, recommends and publishes harmonized European guidelines for PET tray recyclability and develops testing protocols
- Issues technical opinions following a review of and summarizing the test results, conclusions and recommendations (incl. communication)
- Manages the communication with the Applicant

	Steering Committee	Technical Committee
EPRs	Luca Stamare (Corepla)	SABATHIER Chloé (CITEO)
	Paul East (Recoup)	Luca Stamare (Corepla)
		Hagen Helen (Valorplast)
PETCORE	Raphaël Jaumotte	Raphaël Jaumotte
Gen Secretary	Argiris Dabanlis	
Brand owners		
Manufacturers	Ana Fernandez (KP)	David Constant or Olivier Laigre (PACCOR)
	Siobhan Parks (Sharpak - Guillin)	Samuel Pardo (KP)
	Mark Dawes (DUPONT TEIJIN)	Matthias Mazurelle (TPL)
Recyclers	Herbert Snell (VEOLIA)	Fabrizio DiGregorio (PRE)
	Paolo Glerean (ALIPLAST)	Willem Christiaans or Marc Mes (WELLMAN)

Send your applications!

Tray Circularity Evaluation Platform



You can find us

- <https://www.tcep-europe.org/>
- <https://www.petcore-europe.org/recyclability-evaluation-platforms.html>
- What you can find there



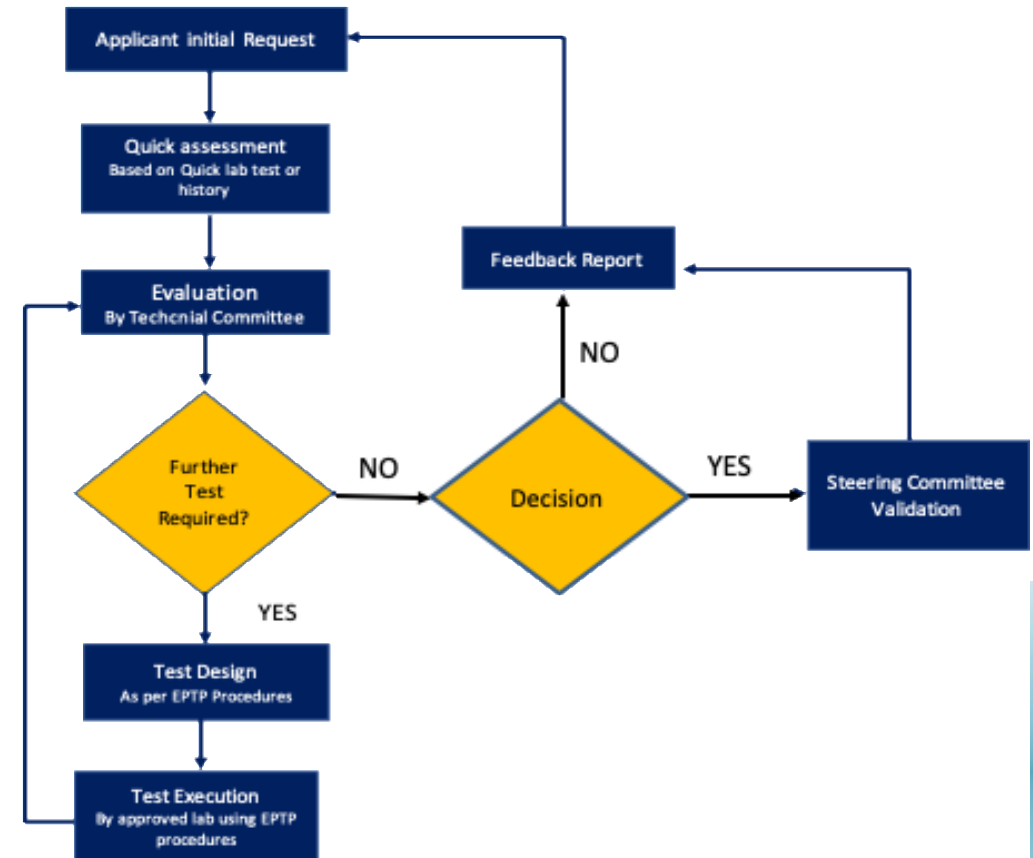
- Application procedure
 1. Countersign the Secrecy Agreement between Petcore Europe and the Applicant. This is the same for all applications
 2. Fill in the application form
 3. Both documents can be downloaded <https://www.petcore-europe.org/recyclability-evaluation-platforms.html> or ask us to send them to you

Important note:

Applicants may request exclusion for members of the TC in case they consider them as competitors

Applicant representatives in the TC are excluded from the panel when their application is discussed

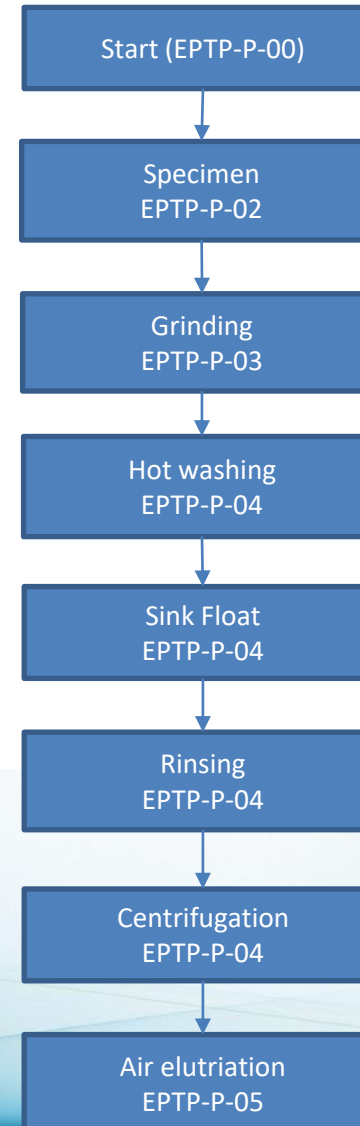
- Application procedure
4. Initial feedback on existing documents and test results already available by applicant





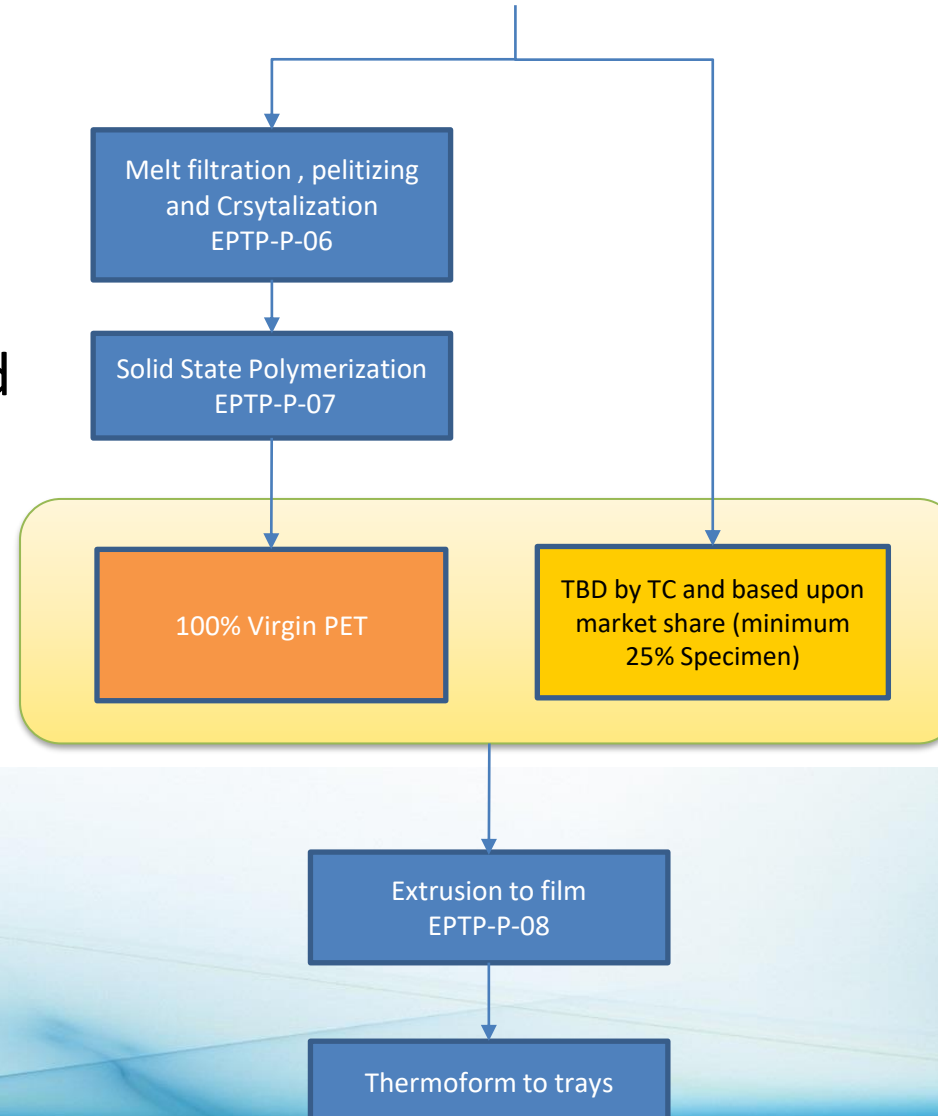
- Application procedure

5. Test procedure execution at qualified laboratory



- Application procedure

5. Test procedure execution at qualified laboratory





- Application procedure

5. Endorsement



ENDORSEMENT LETTER

Brussels, XXXXXX

The Technical Committee of the Tray Circularity Evaluation Platform (TCEP) was requested to assess the impact of:

XXXXXXXXXXXXXXXXXXXXXXXXXXXX

to be introduced in the PET tray market, market guaranteeing compatibility with actual European PET thermoforms recycling.

Based on the TCEP assessment's outcome and current market knowledge in 2022, the Tray Circularity Evaluation Platform (TCEP) concludes that:

The use XXXXXXXXXXXXXXXXXXXXXXXX will not have a negative impact on current European PET tray Recycling streams. Thus, an endorsement is given for a market penetration up to XXXXXXXXXXXXXXXX%.

TCEP will continue to monitor any effect of the materials listed above on EU recycling streams.

Upon prior notice to applicant the TCEP reserves the right to update and change the conditions of this endorsement at any time in accordance with the most recent technologies, assessments and experience.

The Tray Circularity Evaluation Platform (TCEP) is a voluntary European industry initiative that provides PET thermoforms design guidelines for recycling, evaluates thermoform packaging solutions and technologies, and facilitates understanding of the effects of new PET thermoforms innovations on recycling process. The TCEP initiative fully supports the economic and Environmental sustainability of the European PET value chain.



Key achievements in 2022 and first semester in 2023

- Expand the scope of the platform from “recyclability” to “circularity” which is a wider scope
- Test a number of innovative proposals by the applicants related to recyclability compatibility, securing the confidentiality
- Set up rules for testing and reference samples when including secondary elements such as lids or labels
- Consider more laboratories for testing thus offering broader options to applicants and improve speed obtaining results to complete assessments. Laboratories under consideration are:
- Continuous monitor of thresholds on the protocol based on market and industry knowledge and acceptance
- **Bring the platform to live and create momentum**



2023 and beyond:

- Finalize design guidelines for Coloured and Multilayer
- Calibrate protocols and qualify additional labs
- Quarterly reviewed on positive endorsements
- Communicate platform through social media (Twitter, FB, LinkedIn) [Twitter](#), [LinkedIn](#) & [Facebook](#)



Call to apply!

Receive and review more innovations to evaluate their suitability for endorsement

Contribute to grow PET thermoforms recycling stream through application of DfR

The Nestwork
Avenue de Broqueville 12
1150 Brussels
Belgium

Tel.: +32 (0)2 315 24 88
Email: management@petcore-europe.org
Contact: Julie Legrain
Website: www.petcore-europe.org

