

RETRAY: certification for PET thermoforms circularity



www.ecosensefoundation.org

ABOUT US

We are a NON-PROFIT organisation born in 2017

TO CONSOLIDATE a CIRCULAR ECONOMY MODEL in

the VALUE CHAIN OF THERMOFORMED CLEAR PET PACKAGING

by means of CERTIFICATION

We are the owners of the RETRAY certification scheme



 **Avda. de España 17, 2ª planta, Oficina 1. 28100**
Alcobendas (Madrid)

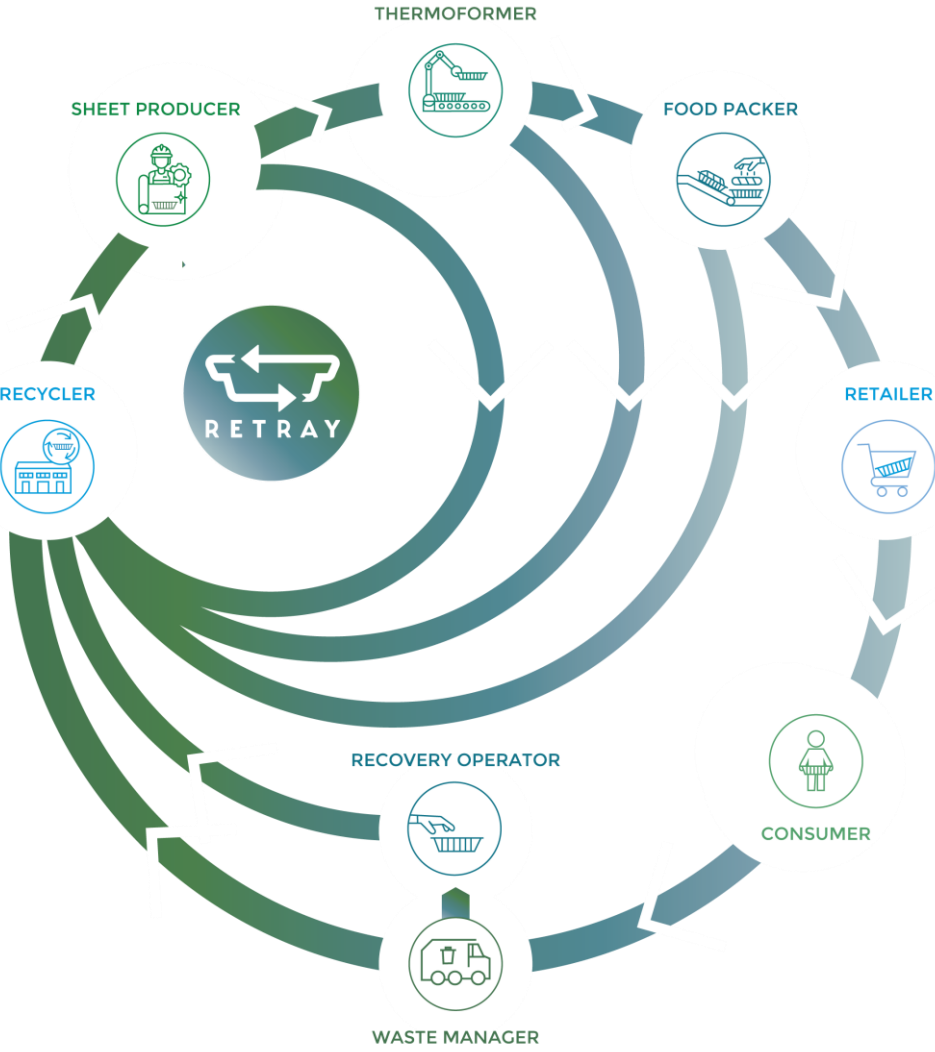


Ecosense Foundation, RETRAY and ECOSENSE are registered trademarks owned by the Plastic Sense Foundation.

ABOUT US



CLOSING THE LOOP



29

CERTIFIED PROCESS OF SHEET & PACKAGING MANUFACTURING + APPROVED COMPANIES & PRODUCTS



4

COUNTRIES

RETRAY'S PRESENCE



LEGAL TARGETS

PET Trays

Recyclable:

by 2030 complying
DfR Guidelines

by 2035 recycled at
scale



Recycling capacity

X 5 (at least)



CLOSING THE LOOP

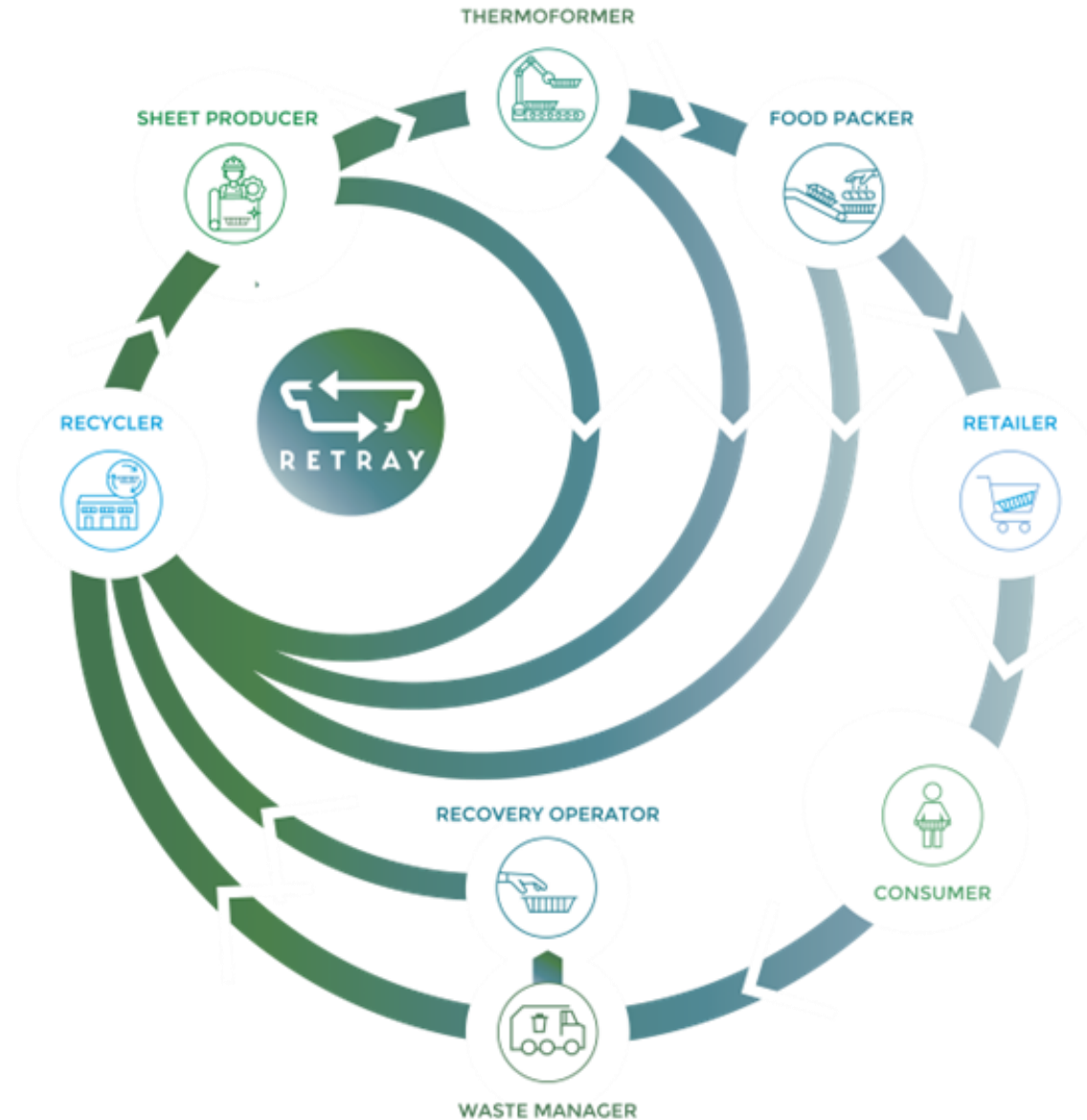
OUR DIFFERENCE

from other certification schemes

Companies CAN ONLY
certificate with RETRAY if they
are incorporating recycled PET
coming from waste
thermoforms

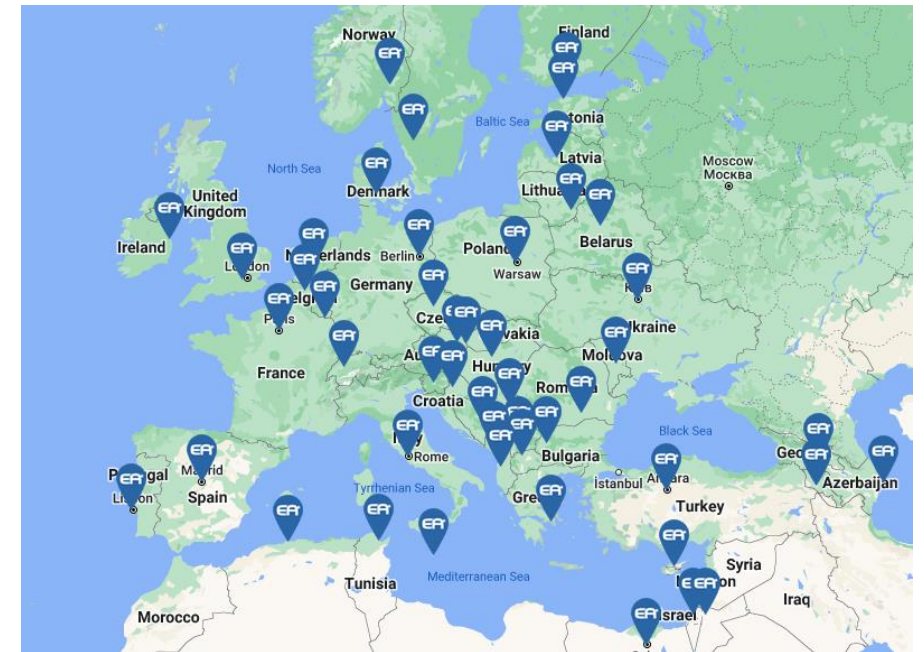


We promote
“Tray-to-tray recycling”



THE IMPORTANCE OF CERTIFICATION

1. Legal requirement for environmental claims
2. Legal requirement to discount recycled content for national single use plastics taxes
3. Useful tool for EPR economical contributions as third party accreditation to apply bonuses and premiums related to recycled content and recyclability.



ISO/IEC 17065

EN 15343

HOW IT WORKS

Transparent System

- ✓ Public Standards (“Procedures”)
- ✓ Audits performed by Certification Bodies under ISO 17065 accreditation



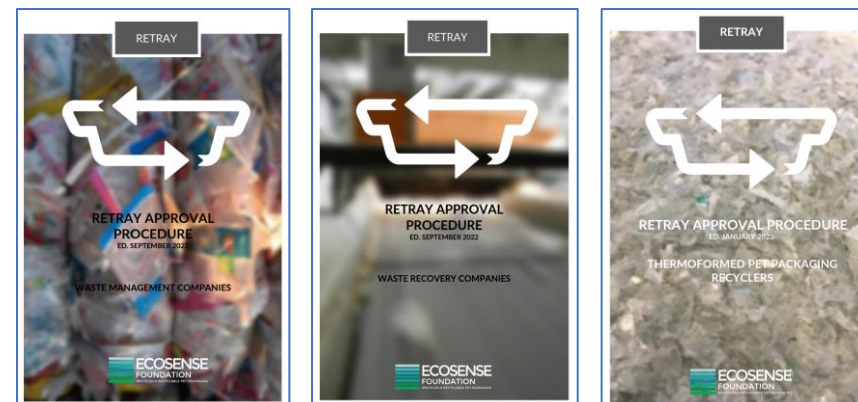
Certification



Label use regulation



Approval

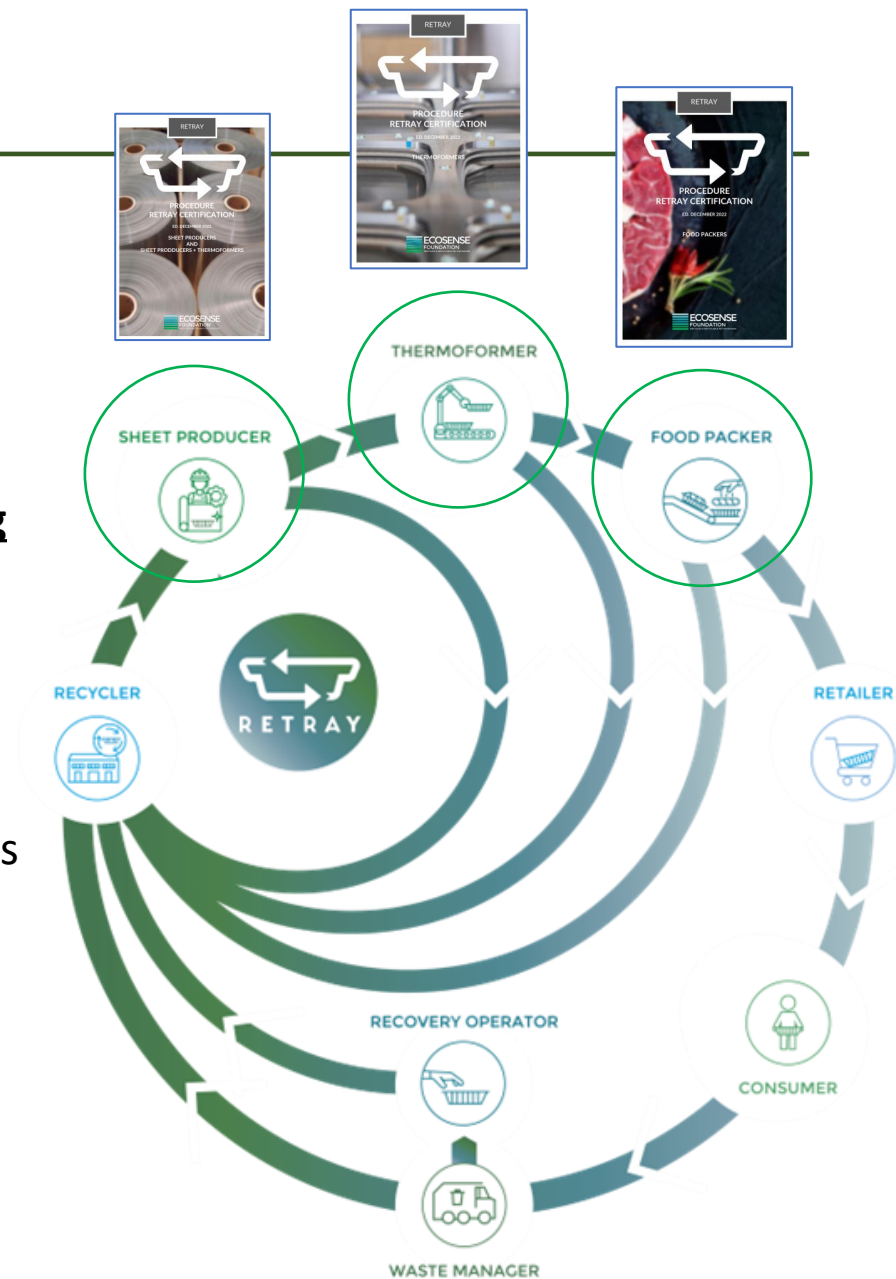


HOW IT WORKS

Certification



- 1.- **Verify the traceability** on the incorporation of recycled material (upstream) and waste management (downstream)
– *MANDATORY requirement to audit*
- 2.- **Quantify the incorporation of %rPET in the manufacturing process**
(in a time frame: 1Yr) according to EN 15343
– *OPTIONAL requirement to audit*
- 3.- **Quantify the amount of %rPET incorporated in products**
(family formats) according to EN 15343 from PET thermoforms and from other sources (ei: bottles)
– *MANDATORY requirement to audit (RETRAY Process 1. mandatory)*
- 4.- **Verify the recyclability** of the postconsumer tray
(mono/multilayer)
– *OPTIONAL requirement to audit*



More info: <https://ecosensefoundation.org/en/certification/>

HOW IT WORKS

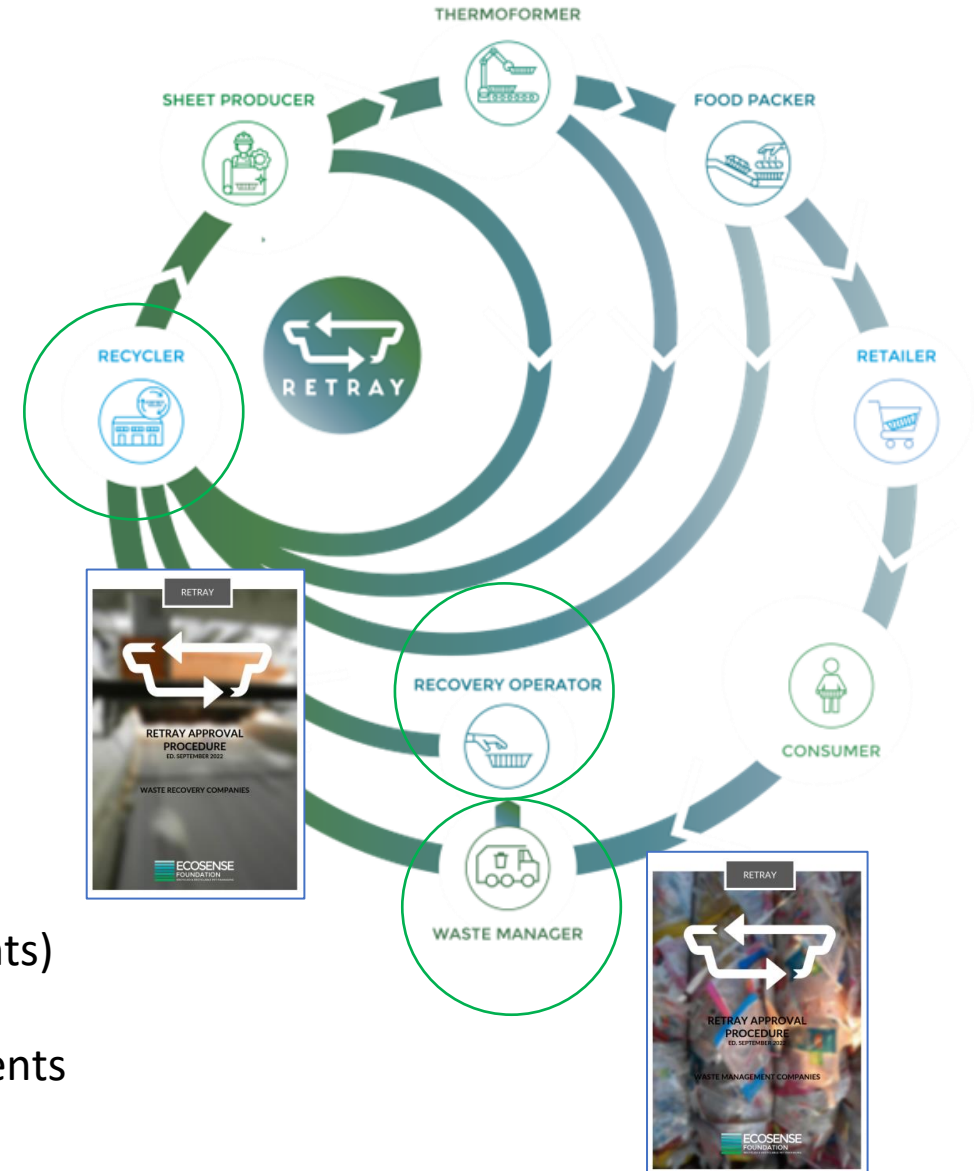
Approval

Waste manager and recovery companies' verification:

- 1.- Traceability requirements of in-put and out-put
- 2.- Environment and quality assurance requirements

Recyclers:

- 1.- Operation and functioning legal requirements
- 2.- Control requirements for in-put and out-put materials
- 3.- Inventory management requirements
- 4.- Recycling process (quality, control and traceability requirements)
- 5.- Environmental protection and quality management requirements



Certified companies (sheet, thermoforms and packers)



Approved companies (recovery and recycling of trays)



Started
contact for
approval



<https://ecosensefoundation.org/wp-content/uploads/2023/05/retray-company-list.pdf>

RETRAY: certification for PET thermoforms circularity



Thank you!

mercedes.gomez@ecosensefoundation.org