



March 2023

# The Company

- REPETCO is a company founded in 2017 in Spain, not linked to any business group with interests in other sectors.
- It is owned by private shareholders with extensive experience in industrial activities and supported by a highly qualified technical team specialized in recycling of plastic materials and circular economy.
- REPETCO will recycle plastic food packaging from post-consumer origin – a material hard to recycle. Currently these plastics are mostly landfilled or incinerated.
- The Company has been involved in R&D activities for 4 years, which have resulted in the development of an environmentally friendly process for recycling multilayer PET trays thus allowing their reuse.
- In this recycling process no chemicals are used in the delamination phase.

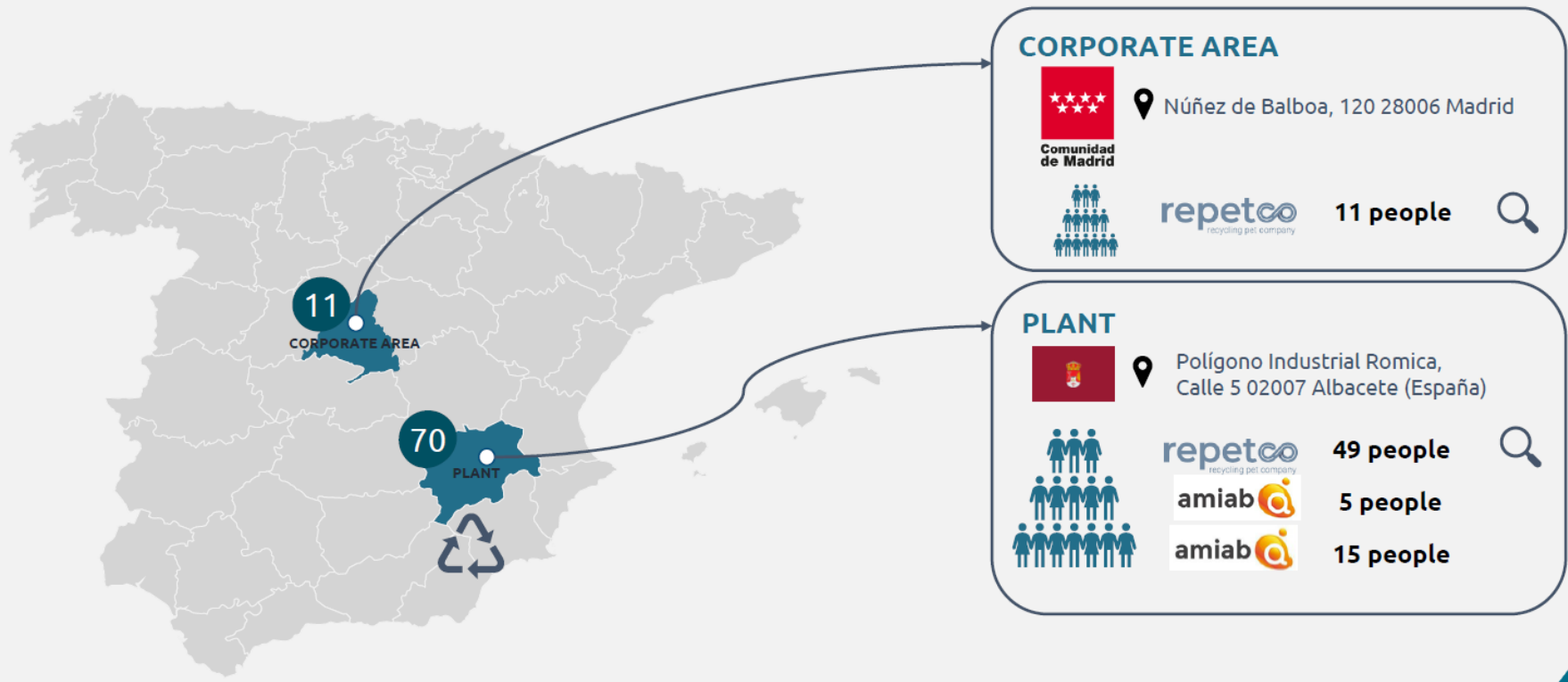


**International patent WIPO (WO2020025836 – SYSTEM AND METHOD FOR SEPARATING THE LAYERS OF MULTILAYER PLASTICS)**

# The plant

## Location

REPETCO has a plant located in Albacete and the corporate area is in Madrid.



Albacete – Valencia: 170 km

Albacete – Madrid: 250 km

# The plant

- REPETCO has built a factory in Albacete (Romica Industrial Park), which will create direct employment for about 50 workers (plus the corresponding indirect jobs).
- The plant is prepared (and authorized) to process up to 127,000<sup>(\*)</sup> Tn/year of post-consumer origin providing an economic and environmental solution to this waste.

## PET RECYCLING PLANT - ALBACETE

# SOCIAL AND ENVIRONMENTAL IMPACT

REPETCO will build a recycling plant for multi-layer PET/PE containers of post-consumer origin in Albacete. These containers, used in the food industry, will be sustainably recycled with a totally innovative technology.

M65€

INVESTMENT

45K

TONS PRODUCTION OF RPET  
PER YEAR

75%

MATERIAL RECOVERY RATE

50

DIRECT JOBS

(\*) Depending on the quality of the input material: the higher the quality, the lower needs for the input capacity.

# REPETCO recycling process

- Multilayer PET/PE Film Recycling

Unlike the large majority PET bottles present in the market, the multilayer PET/PE film for food use is composed of several layers of different materials joined by adhesive glues of different compositions: MULTILAYER PET FILM.



**To recycle the multilayer is mandatory to:**

- Eliminate adhesion between layers
- Separate base materials

# REPETCO recycling process

- Multilayer PET/PE Film Recycling

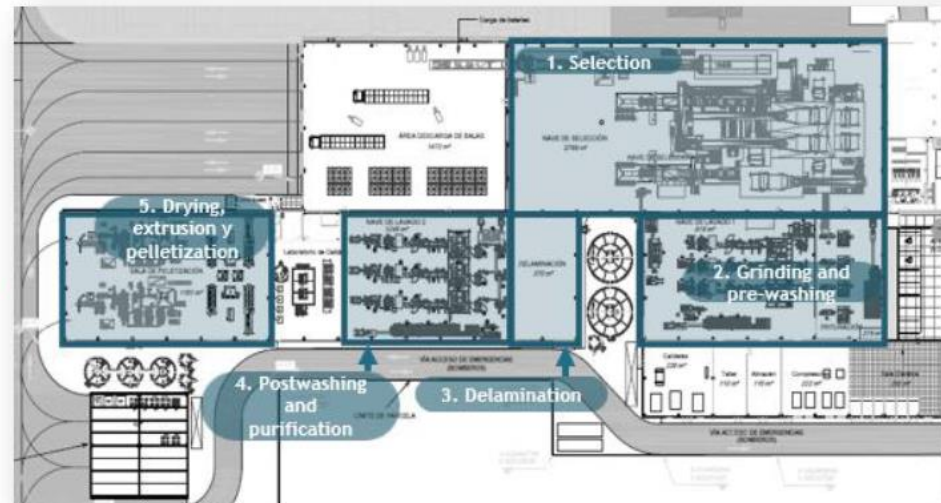
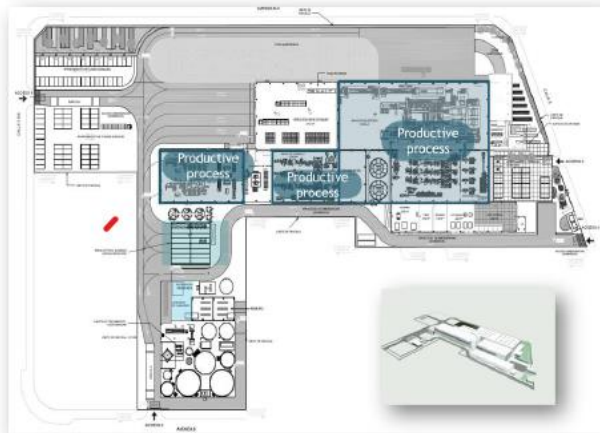
The entire process is made up of 3 blocks



# REPETCO recycling process

## Multilayer PET/PE Film Recycling

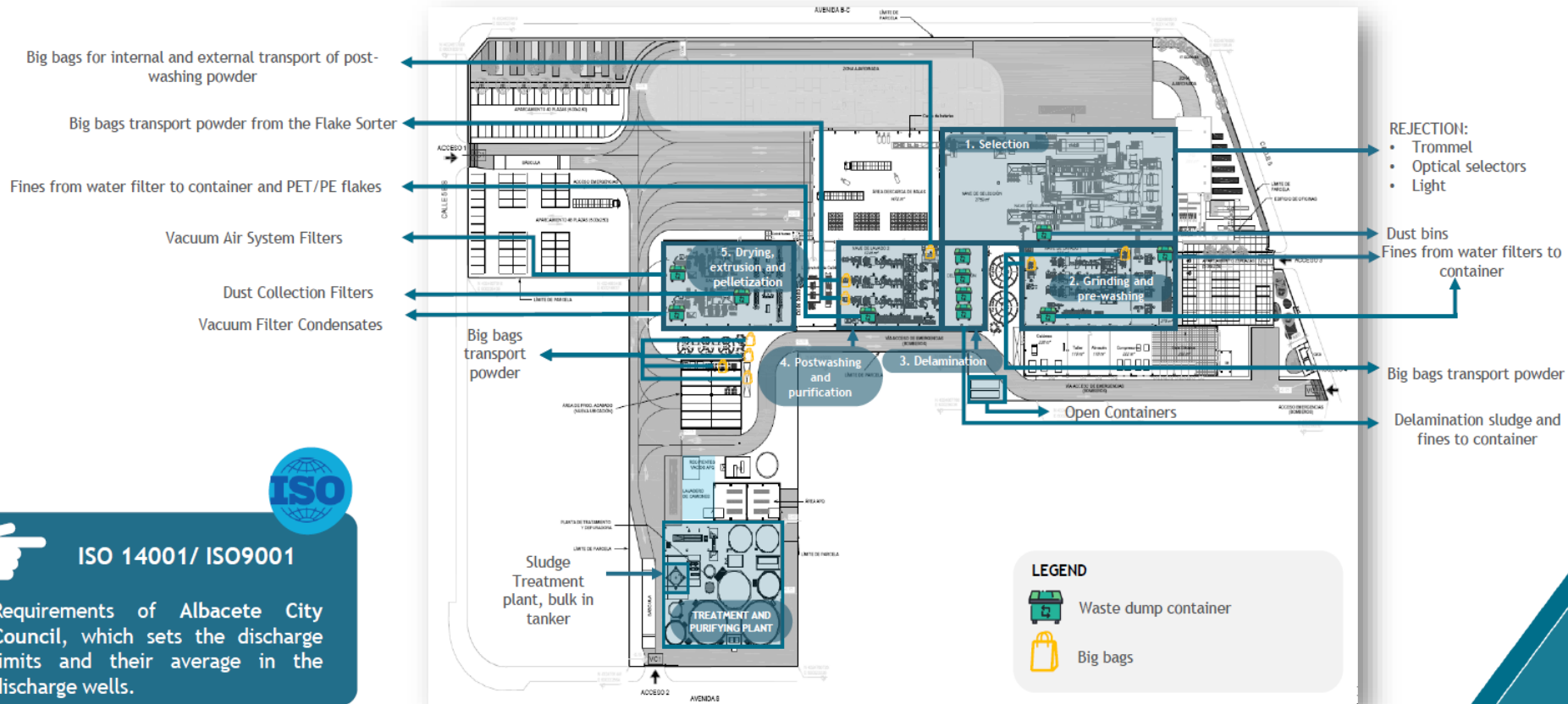
REPETCO's production process has been divided into 5 STAGES: 1. Selection, 2. Grinding and Pre-washing, 3. Delamination, 4. Postwashing and purification and 5. Drying, extrusion and pelletizing.



# REPETCO recycling process

## Multilayer PET/PE Film Recycling

In addition, the plant has all the environmental protection measures required by current regulations on discharges, emissions and waste management and incorporates cutting-edge technology on water treatment and raw material storage...





# REPETCO process: sustainable and cost-effective

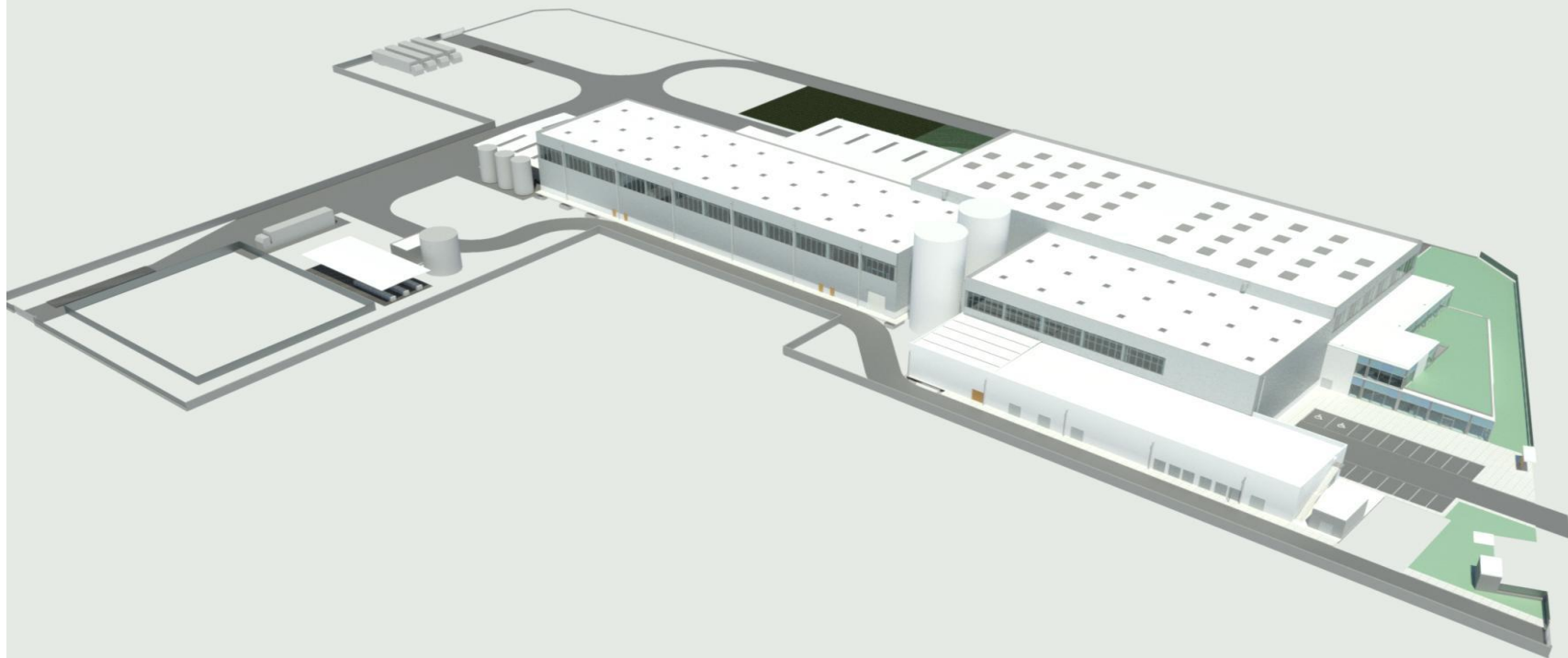
9



## CHARACTERISTICS:

- Adequate granulometry
- 99.96% purity
- 1<sup>st</sup> stage IV > 0,72
- 2<sup>nd</sup> stage IV up to 0,80

# Factory



# Factory



# Factory





# Factory





# Factory



**Thank you**