



YOUR PARTNER IN RECYCLING SYSTEMS

CORE ACTIVITIES & SALES PERFORMANCE



Size reduction and rubber plants



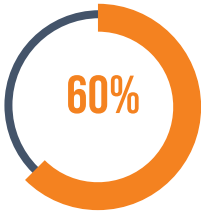
Washing lines and turn-key systems



Waste water treatment plants



Waste management and pre-sorting



PET, HDPE, PP container washing line



Film washing line



Pulper waste and special projects

SALES TURNOVER

Over 85 Millions in 2024

Over 63 Millions in 2021

Over 57 Millions in 2019



PACKAGING

RIGIDS

- PET/HDPE/PP bottles
- PS containers
- Mix PO
- Thermoforms PE/PET/PP/PS

FLEXIBLES

- PE/PP flexible
- PET flexible
- MIX PO



OTHER PROCESSES

- Rubber
- De-Inking
- Pulper waste recycling
- WEEE
- Pipes PP/HDPE/PVC
- Agri-film

CHEMICAL RECYCLING

- Preparation (Dry – Wet cleaning) for chemical recycling plant

NEW DEVELOPMENTS

- Textile
- Delamination



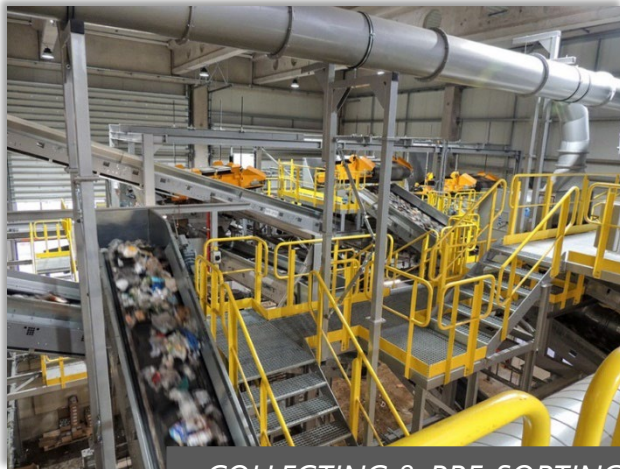
WHERE WE MAKE THE DIFFERENCE

PROFILE



CUSTOMER ACTIVITIES

PROFILE



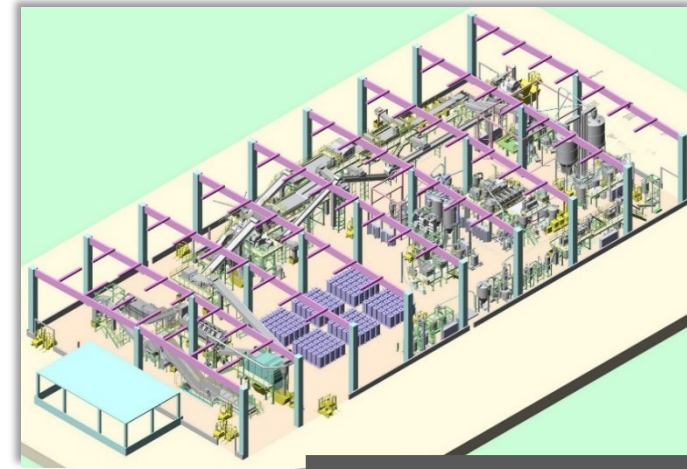
COLLECTING & PRE-SORTING



*BRAND OWNERS and
PACKAGING PRODUCERS*



CHEMICAL INDUSTRY



VENTURE CAPITALS

PET WASHING LINE





HDPE WASHING LINE



FILM WASHING LINE

GET TO KNOW US!



sales@sorema.it

sales@previero.it



+39 031 63491250



+39 031 63491217

VISIT OUR WEBSITE



www.sorema.it

Via per Cavolto 17, Anzano del Parco (CO) 22040, ITALY

