

PET Tray recycling in France

A way to make it possible from collection to recycling

Juliette Beaulieu



Donnons ensemble une
nouvelle vie à nos produits.

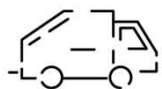


Understanding packaging recycling



Created by FMCG & retailers to run EPR
**Extended
Producer
Responsibility**
for household packaging and paper

Missions :



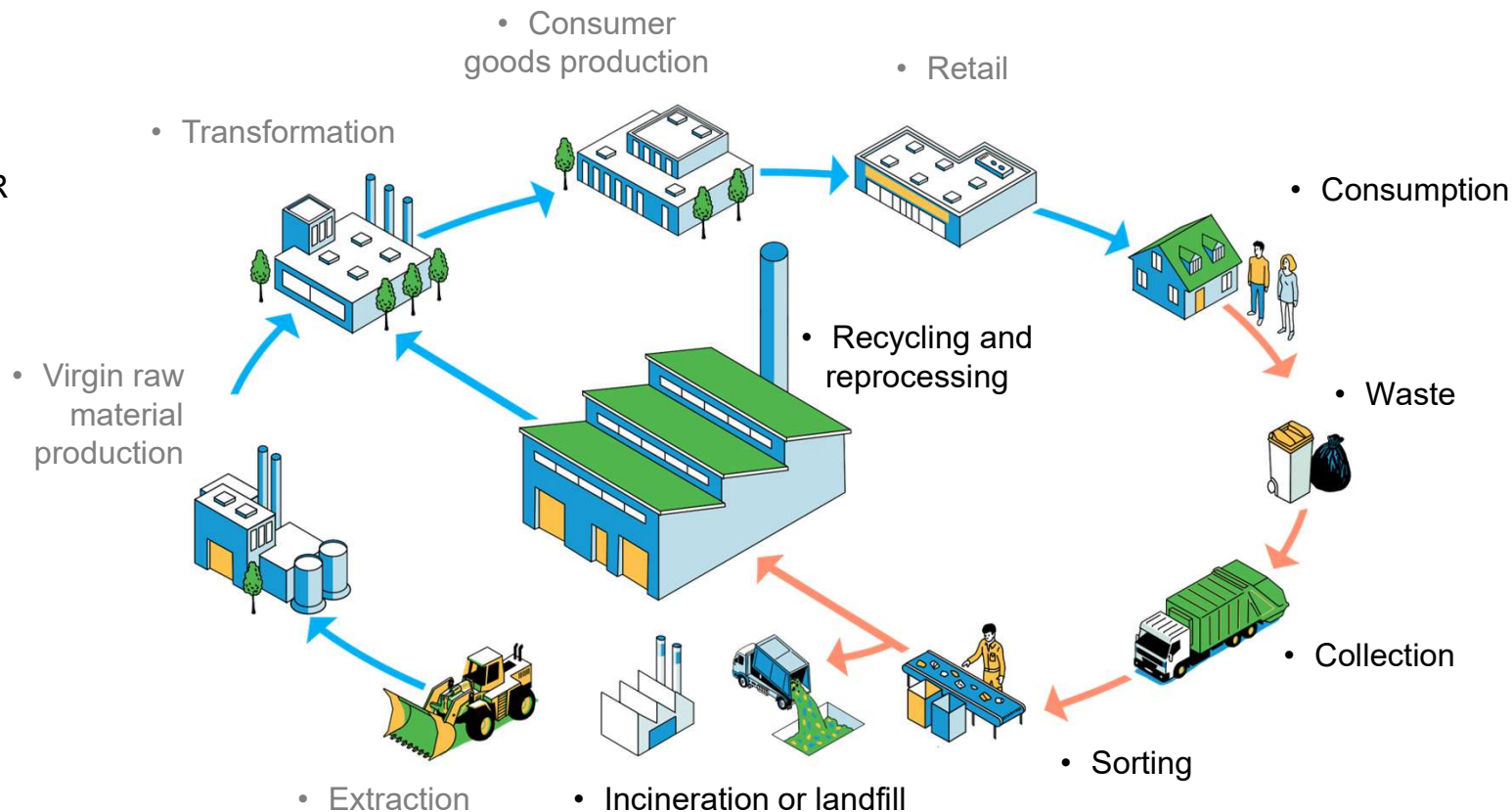
Organise collection, sorting and processing



R&D to develop eco-design and industrial processes

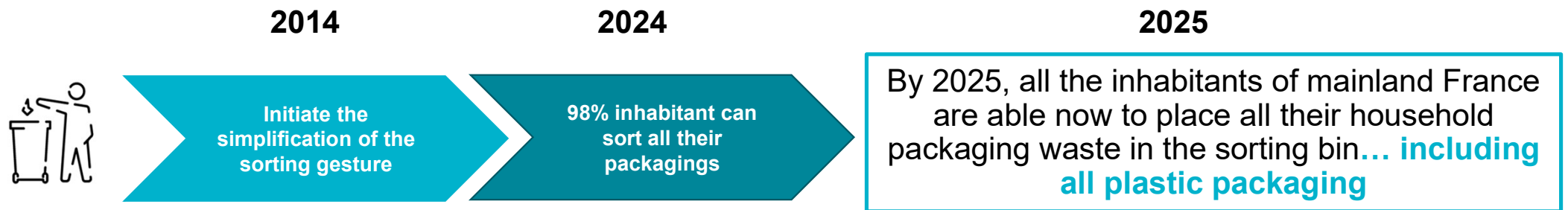


inform and raise public awareness of sorting used packaging and paper.



Developing an ecosystem to improve tray recycling

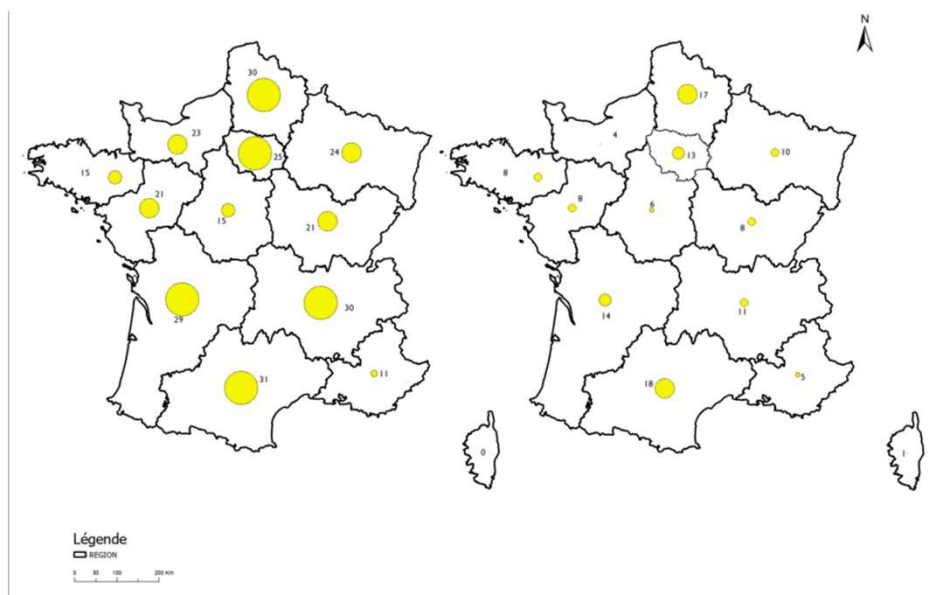
Collection: French situation



Improvement of collection -> Observatoire du geste de tri (published end of 2024)

+6,4 kg/hab/year between 2018 and 2022

Sorting capacities evolution between 2010 and 2023

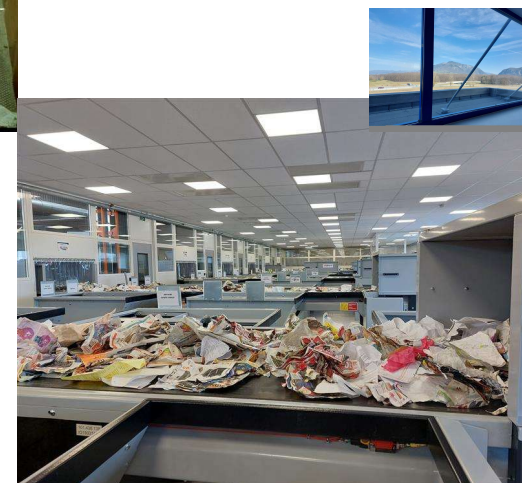
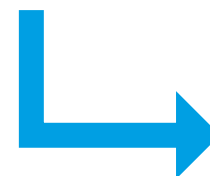


➤ Rationalization of the sorting center fleet

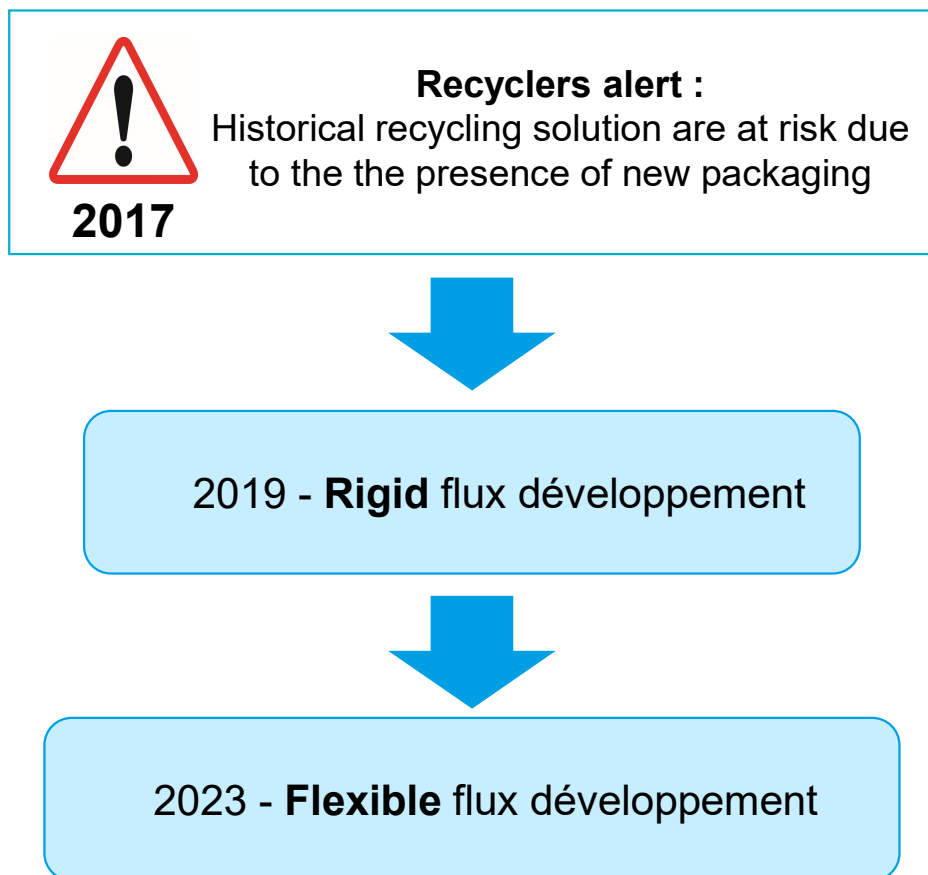
Closure/reconversion of the smallests

➤ Modernization of sorting centers

Improvement of working conditions



Flux Développement creation



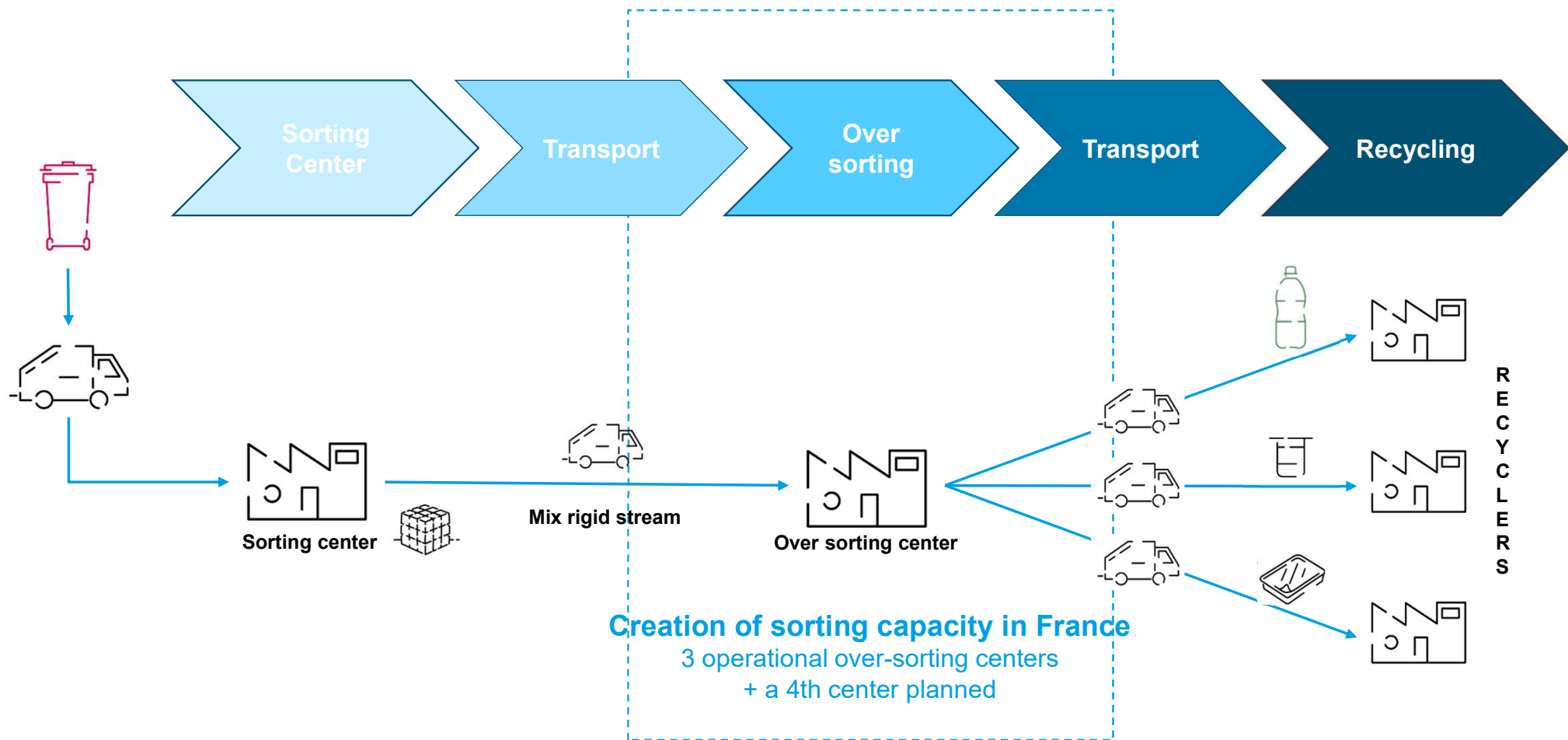
Gathering « hard to recycle » plastics: rigid and flexible Flux Développement

RIGID FLUX DÉVELOPPEMENT

PET COLORED AND OPAQUE
PET TRAYS
PS / XPS / PSE



Rigid Flux développement has to be over sorted



Creating oversorting capacities to consolidate tonnage for new recycling streams

70KT of capacity managed by Citeo will be implemented by 2025, following a nearly one-year competitive dialogue procedure. These capacity will raise 100kt by 2027

SEPUR

Thiverval-Grignon (78)
2027



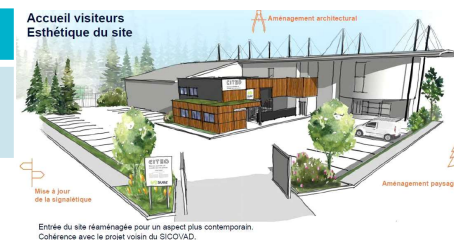
EMC

Mende (48)
2025



SUEZ

Epinal (88)
2023



Bourgogne-Recyclage

Ruffey les Beaune (21)
2023



+ Additionnal capacities via contracts with sorting centers
To ensure flexibility and adaptability

Opening of oversorting centers

- ✓ First over-sorting center to be commissioned in May 2023: Bourgogne Recyclage, Beaune, **30 000 t/year**
- ✓ Second over-sorting center to open in October 2023:Suez, Épinal, **25 000 t/year**
- ✓ The third over-sorting center in Mende is opening in May 2025, **15 000 t/year**
- ✓ The fourth announced few weeks ago will open in western Paris in November 2026



These sorting centers are equipped with a secure visitor route; guided tours of the process are frequently organized for Citeo partners as well as schools and local associations.

© Citeo –Petcore thermoforms conference - May 2025



Beaune over sorting center

Main figures

- 36 000 hours assembly
- 15 optical sorting machine
- 149 conveyor belt



Epinal over sorting center

- Ergonomic design
- Energy savings
- Job preservation

Over sorting Rigid Flux Développement to create PET tray streams

Over sorting centers can produce either a mono, multi or a mono+multi mix stream depending on the needs of recyclers

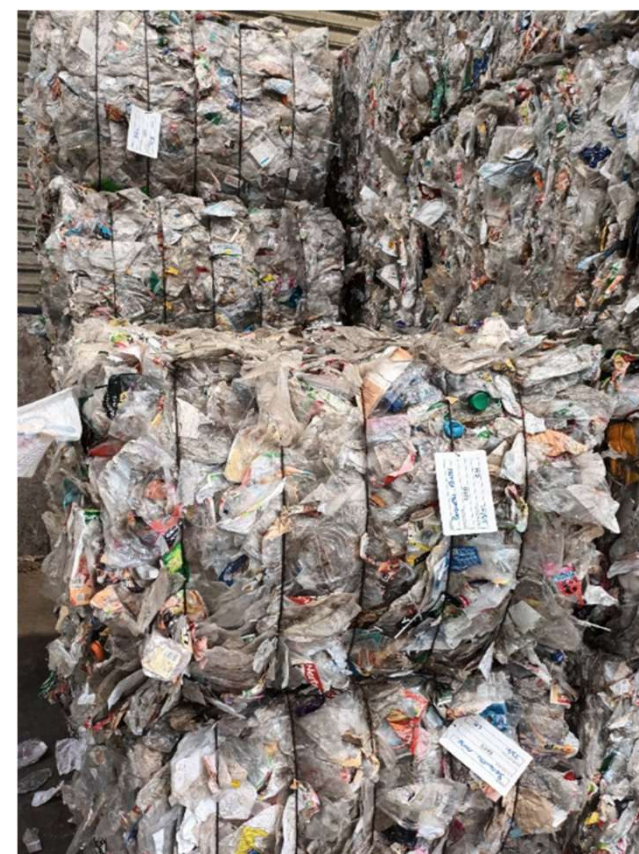
FD3 bales (monolayer clear PET trays)



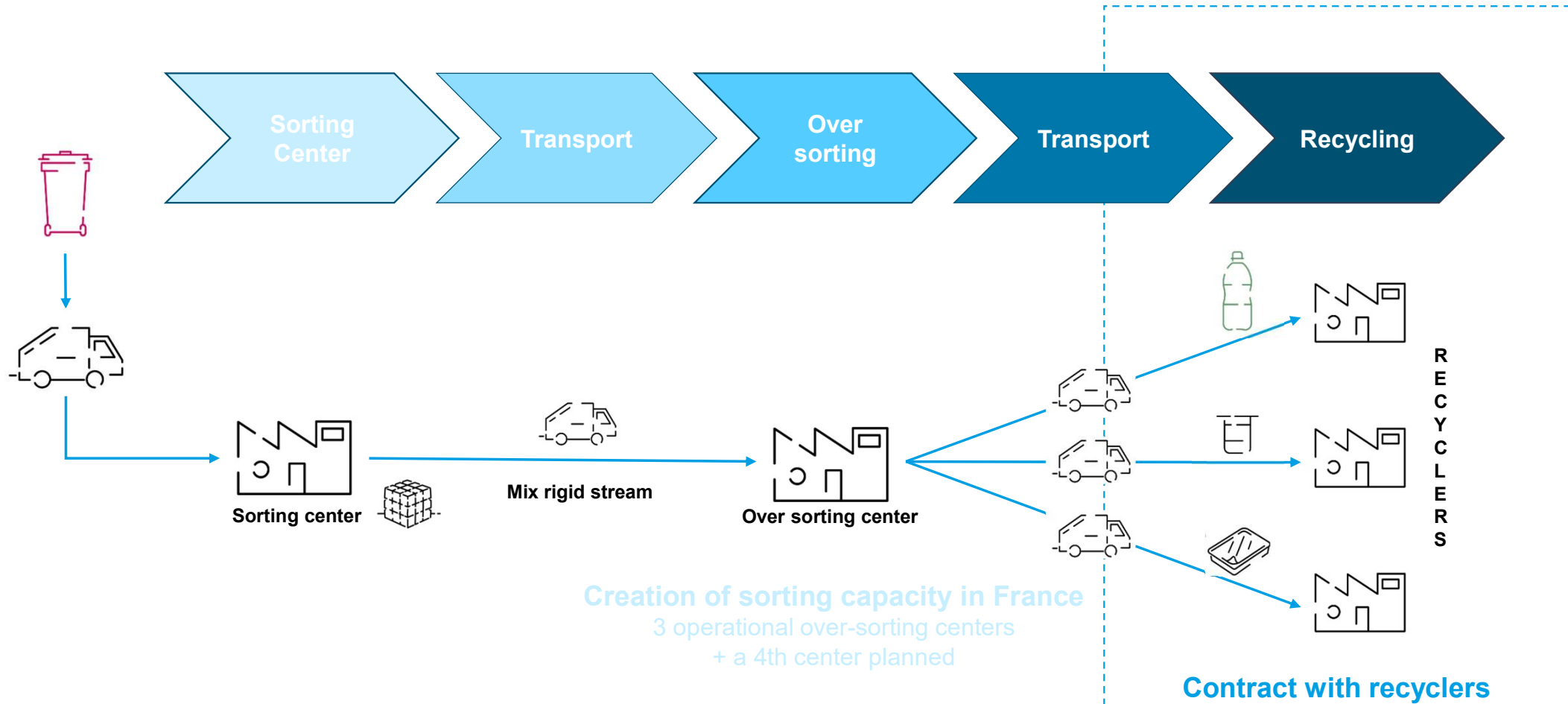
FD9 bales (multilayers clear PET trays)



FD12 bales (mix mono & multi clear PET trays)

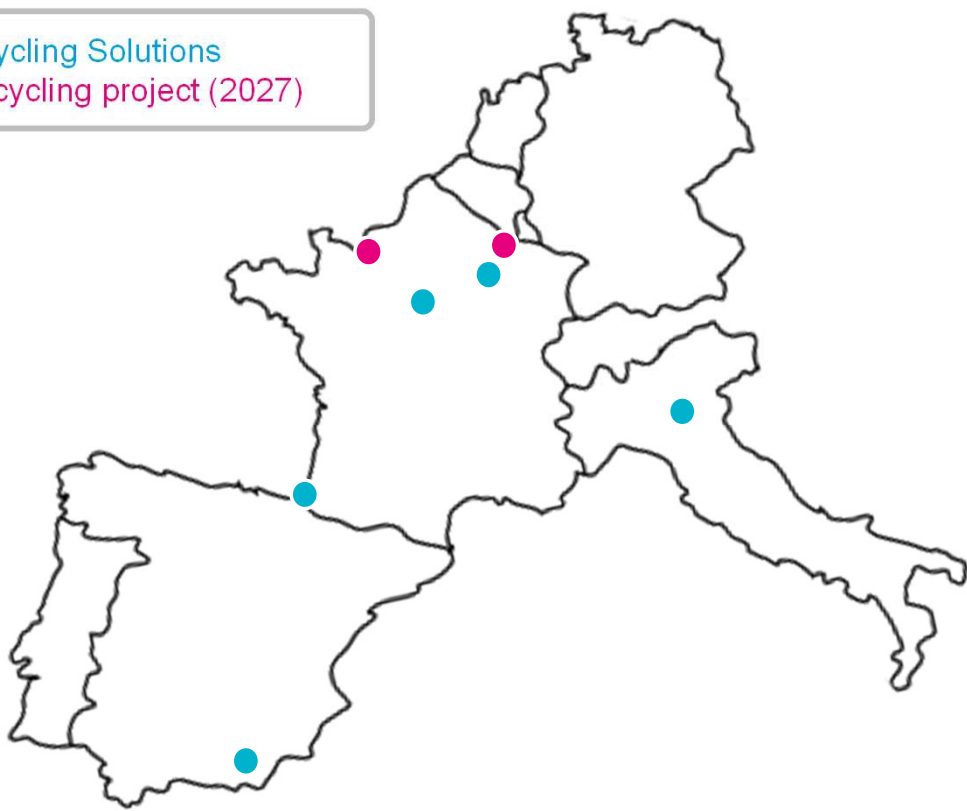


Recycling of trays



Recycling solution for French PET trays

- Current Recycling Solutions
- Chemical recycling project (2027)



Year	Volume produced by over sorting centers
2023	14 kt
2024	26 kt
2025 forecast	26 kt

A call for tender was launched in 2022 to allocate tray volumes to recyclers.

The **increase** in tray volumes will result in **a new call for tenders**, which will be launched this year.

Fostering the incorporation of PCR in plastic packaging through ecomodulation

Fostering the incorporation of PCR in plastic packaging through ecomodulation

Incentive for PCR – Eligibility criteria

Plastic resin	Incentive amount per ton of PCR incorporated in packaging	Additional incentive amount per ton of PCR incorporated in packaging
PET	50 €/t	350 €/t (from tray)
PEBD	400 €/t	150 €/t (from domestic PCR)
PEHD	450 €/t	-
PP	450 €/t	-
PS	450 €/t	-

Only **post consumer** (coming from domestic or industrial use)

Certification following EN15343 from both regenerator and plastic converter

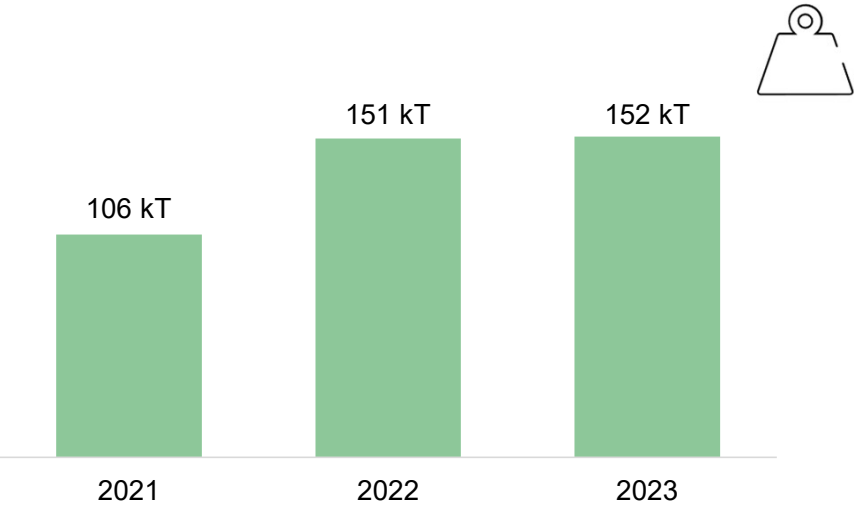
➔ Recyclclass Recycled Plastic

➔ Polycert Europe initiative

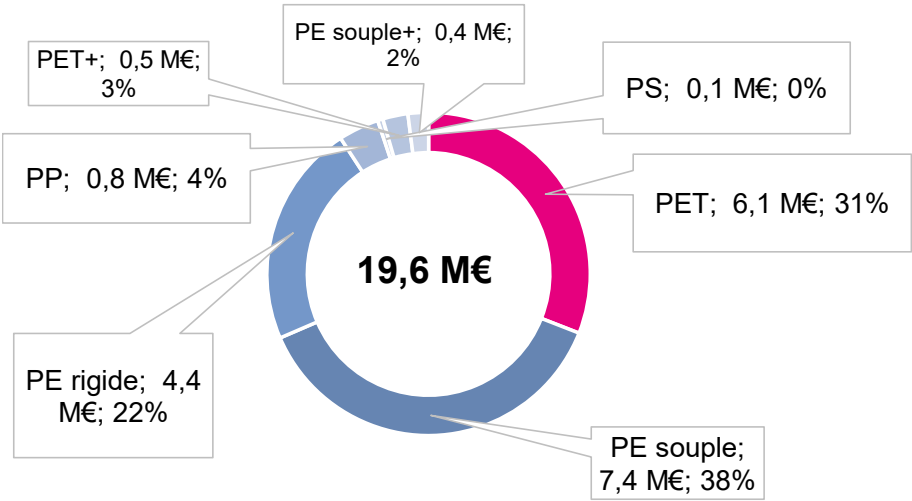
Proximity criteria: only EUROPEAN waste recycled by EUROPEAN regenerators

PCR incentives – around 19 M€ paid for around 150kt incorporated, stable trend

PCR tonnage in domestic packaging
going up, plateau in 2022-2023



In 2023, PCR incentives represent around 19 millions €, 6 millions only for rPET



— Conclusion

Improving Tray Recycling

